

CB-50

DATA BUOY

- Emergency response data buoy
- Cellular, satellite or radio telemetry
- Supports a variety of environmental sensors
- Accommodates X2-SDL data loggers
- Rugged polymer-coated foam hull



The NexSens **CB-50** Data Buoy is designed for quick deployment in emergency response situations including industrial spills and natural disasters. The buoy can be deployed from small boats, large vessels or even helicopters, making it the ideal choice for applications where water needs to be monitored at a moment's notice. Compatible instruments include turbidity sensors, dissolved oxygen sensors, hydrocarbon sensors, fluorometers, multi-parameter sondes, pressure transducers, and more.

The buoy is constructed of an inner core of cross-linked polyethylene foam with a tough polyurea skin and stainless steel frame. The 5.5" ID center hole houses the **X2-SDL** data logging system, which includes integrated power supply and wireless antenna. A removable topside foam tower protects the electronics, supports solar marine lights, and offers a convenient lifting point via (3) 5/8" eyes. Optional accessories include instrument cages and mounting clamps to secure instruments to the platform.

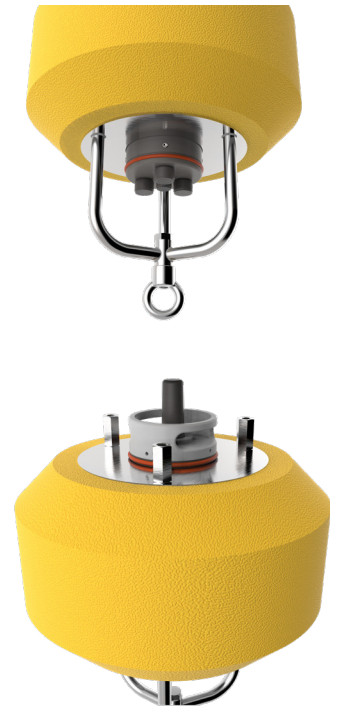
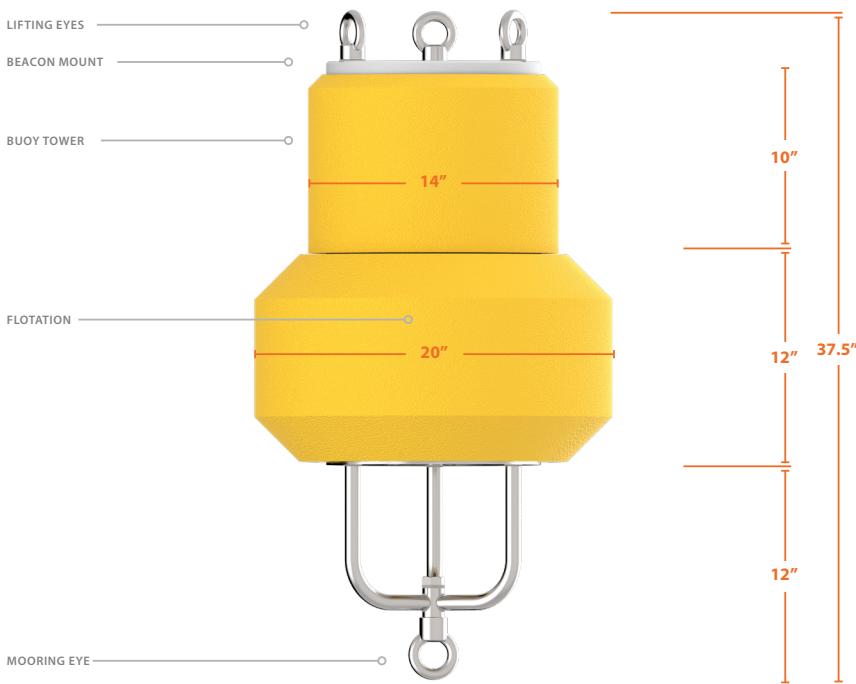
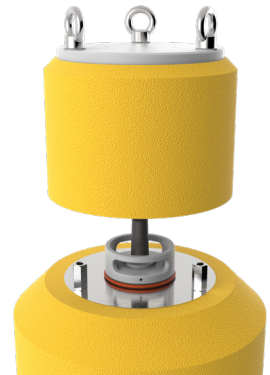
The **CB-50** Data Buoy is designed to accommodate NexSens **X2-SDL** submersible data loggers. Wireless telemetry options include cellular, Iridium satellite, and spread spectrum radio. The **X2-SDL** is configured with three sensor ports for connection to industry-standard digital interfaces including RS-485, RS-232 and SDI-12. Additional sensor inputs are available through the use of adapters. All sensor connections feature a double O-ring seal for a reliable waterproof connection.

CB-50

DATA BUOY

specifications

Hull Outer Diameter	20.0" (50.8cm)
Hull Height	12.0" (30.48cm)
Center Hole Inner Diameter	5.5" (13.97cm)
Tower Height	10.0" (25.4cm)
Weight	35 lb (16kg)
Net Buoyancy	50 lb (23kg)
Hull Material	Cross-linked polyethylene foam with polyurea coating & stainless steel deck
Hardware Material	316 stainless steel
Mooring Attachments	1x 3/4" eyenut



parts list

Part #	Description
CB-50	Data buoy with polymer-coated foam hull, 50 lb. buoyancy
X2-SDL	X2-SDL submersible data logger
X2-SDL-C-NA4G	X2-SDL submersible data logger with North American 4G LTE cellular telemetry
X2-SDL-C-CATM	X2-SDL submersible data logger with CAT-M1/NB2 LTE cellular telemetry
X2-SDL-I	X2-SDL submersible data logger with Iridium satellite telemetry
X2-SDL-R-DG	X2-SDL submersible data logger with 900 MHz radio telemetry
M550-F-Y	Solar marine light with flange mount & 1-3 nautical mile range, 15 flashes per minute, yellow
CB-CCA	Cage anti-rotation collar for CB-Series data buoys
CAGE-S	Stainless steel instrument cage, 28"
MC-EXO2-S	EXO2s/EXO3s sonde mooring clamp set
CM-600	Instrument cage mount for water quality sensors
CB-ZA	Sacrificial zinc anode for CB-Series data buoys



tel: **937.426.2703**
8am to 7pm EST, Monday-Friday

fax: **937.426.1125**

NexSens Technology, Inc.
2091 Exchange Court
Fairborn, OH 45324
info@nexsens.com

nexsens.com